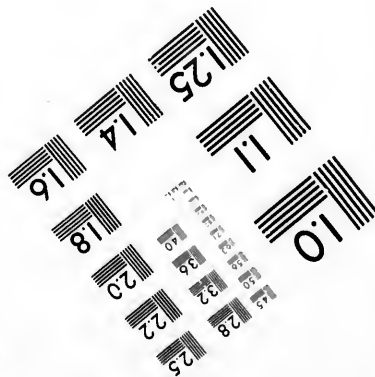
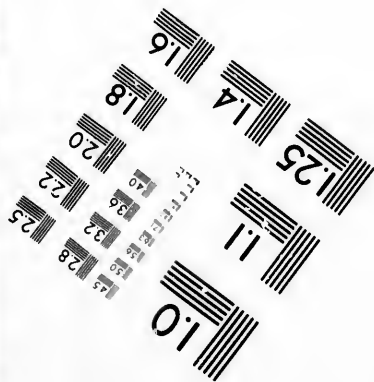
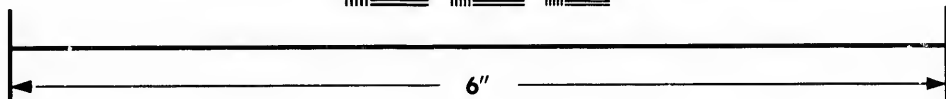
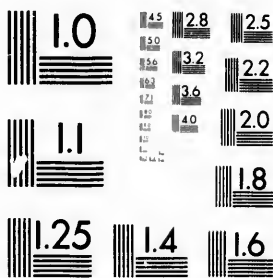


**IMAGE EVALUATION
TEST TARGET (MT-3)**



**Photographic
Sciences
Corporation**

23 WEST MAIN STREET
WEBSTER, N.Y. 14580
(716) 872-4503

1.5 2.8 2.5
1.8 3.2 2.2
2.0

**CIHM/ICMH
Microfiche
Series.**

**CIHM/ICMH
Collection de
microfiches.**



Canadian Institute for Historical Microreproductions / Institut canadien de microreproductions historiques

1.0

© 1981

The copy filmed here has been reproduced thanks to the generosity of:

National Library of Canada

L'exemplaire filmé fut reproduit grâce à la générosité de:

Bibliothèque nationale du Canada

The images appearing here are the best quality possible considering the condition and legibility of the original copy and in keeping with the filming contract specifications.

Les images suivantes ont été reproduites avec le plus grand soin, compte tenu de la condition et de la netteté de l'exemplaire filmé, et en conformité avec les conditions du contrat de filmage.

Original copies in printed paper covers are filmed beginning with the front cover and ending on the last page with a printed or illustrated impression, or the back cover when appropriate. All other original copies are filmed beginning on the first page with a printed or illustrated impression, and ending on the last page with a printed or illustrated impression.

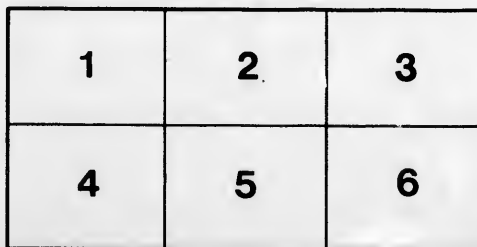
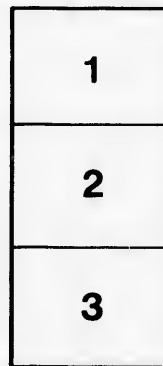
Les exemplaires originaux dont la couverture en papier est imprimée sont filmés en commençant par le premier plat et en terminant soit par la dernière page qui comporte une empreinte d'impression ou d'illustration, soit par le second plat, selon le cas. Tous les autres exemplaires originaux sont filmés en commençant par la première page qui comporte une empreinte d'impression ou d'illustration et en terminant par la dernière page qui comporte une telle empreinte.

The last recorded frame on each microfiche shall contain the symbol \rightarrow (meaning "CONTINUED"), or the symbol ∇ (meaning "END"), whichever applies.

Un des symboles suivants apparaîtra sur la dernière image de chaque microfiche, selon le cas: le symbole \rightarrow signifie "A SUIVRE", le symbole ∇ signifie "FIN".

Maps, plates, charts, etc., may be filmed at different reduction ratios. Those too large to be entirely included in one exposure are filmed beginning in the upper left hand corner, left to right and top to bottom, as many frames as required. The following diagrams illustrate the method:

Les cartes, planches, tableaux, etc., peuvent être filmés à des taux de réduction différents. Lorsque le document est trop grand pour être reproduit en un seul cliché, il est filmé à partir de l'angle supérieur gauche, de gauche à droite, et de haut en bas, en prenant le nombre d'images nécessaire. Les diagrammes suivants illustrent la méthode.



THE MEADOW.

Here when the cloudless April days begin,
 And the quaint crows flock thicker day by day,
 Filling the forests with a pleasant din,
 And the solld snow creeps secretly away,
 Comes the small busy sparrow, primed with glee,
 First preacher in the naked wilderness,
 Piping an end to all the long distress
 From every fence and every leafless tree.

Now with soft slight and viewless artifice
 Winter's iron work is wondrously undone ;
 In all the little hollows cored with ice
 The clear brown pools stand shimmering in the sun.
 Frail lucid worlds, upon whose tremulous floors
 All day the wandering water-bugs at will,
 Shy mariners whose oars are never still,
 Voyage and dream about the heightening shores .

The bluebird peeping from the gnarled thorn
 Prattles upon his frolic flute, or flings,
 In bounding flight across the golden morn,
 An azure gleam from off his splendid wings,
 Here the slim-pinioned swallows sweep and pass
 Down to the far off river ; the black crow
 With wise and wary visage to and fro
 Settles and stalks about the withered grass.

Here when the murmurous May-day is half gone
 The watchful lark before my feet takes flight,
 And wheeling to some loneller field far on,
 Drops with obstreperous cry ; and here at night,
 When the first star precedes the great red moon,
 The shore-lark tinkles from the darkening field,
 Somewhere we know not in the dusk concealed,
 His little creaking and continuous tune.

Here too the robins, lusty as of old,
 Hunt the waste grass for forage, or prolong
 From every quarter of these fields the bold,
 Blithe phrases of their never finished song.
 The white-throat's distant descent with slow stress,
 Note after note upon the noonday falls,
 Filling the leisured air at intervals
 With his own mood of piercing pensiveness.

Often, how often, from this upland perch,
 Mine eyes have seen the forest break in bloom,
 The rose-red maple and the golden birch,
 The dusty yellow of the elms, the gloom
 Of the tall poplar hung with tasseled black,
 Ah, I have watched, till eye and ear and brain
 Grew full of dreams as they, the moted plain,
 The sun-steeped wood, the marshland at its back,

The val
 You
 And out
 Blue
 And here
 Down
 With
 Patched
 So as I w
 The l
 In earth'
 The l
 Even as s
 My sp
 And d
 The fabri
 In reverie
 I soug
 Musing on
 To rea
 In mooded
 I stor
 Whose
 Bound in
 Brave bud
 Like h
 Easily rep
 Covers
 Yet I was
 Who in
 Deem t
 If love be

SUN

Broad shad
 The scythe
 By the long
 Splashing
 Fawn colou
 Round the
 Creeps mur
 O'er the slo
 Belated ero
 Soon will t
 Reach onw
 The sun's l
 Still dream
 And the lon

The valley where the river wheels and fills,
Yon city glimmering in its smoky shroud,
And out at the last misty rim the hills
Blue and far off and mounded like a cloud,
And here the noisy rutted road that goes
Down the slope yonder, flanked on either side
With the smooth-furrowed fields flung black and wide,
Patched with pale water sleeping in the rows.

So as I watched the crowded leaves expand,
The bloom break sheathe, the summer's strength uprear
In earth's great mother's heart already planned
The heaped and burgeoned plenty of the year,
Even as she from out her wintered hearse
My spirit also sprang to life anew,
And day by day as the spring's bounty grew,
The fabric'd dream unlocked the fount of verse.

In reverie by day and midnight dream
I sought these upland fields and walked apart,
Musing on nature, till my thought did seem
To read the very secrets of her heart ;
In mooded moments earnest and sublime
I stored the themes of many a future song,
Whose substance should be nature's clear and strong,
Bound in casket of majestic rhyme.

Brave bud-like plans that never reached the fruit,
Like her's our mother's who with every hour,
Easily replenished from the sleepless root,
Covers her bosom with fresh bud and flower ;
Yet I was happy as young lovers be,
Who in the season of their passion's birth
Deem that they have their utmost worship's worth,
If love be near them, just to hear and see.

SUNSET AT LES EBOULEMENTS.

Broad shadows fall. On all the mountain side
The scythe-swept fields are silent. Slowly home
By the long beach the high-piled hay carts come,
Splashing the pale salt shallows. Over wide
Fawn coloured wastes of mud the slipping tide,
Round the dun rocks and wattled fisheries,
Creeps murmuring in. And now by twos and threes,
O'er the slow-spreading pools with clamorous chide,
Belated crows from strip to strip take flight.
Soon will the first star shine ; yet ere the night
Reach onward to the pale green distances,
The sun's last shaft beyond the grey sea-floor
Still dreams upon the Kamouraska shore,
And the long line of golden villages.

ARCHIBALD LAMPMAN.

